

# Product of the Month

Get **20%** discount\* now!

**SERVA**  
■ serving scientists ■



**November**

\*For all SERVA customers within the EU. Outside Germany and Austria online shop orders only. Can not be combined with other discounts, promotions etc.

## Mammalian Membrane Protein Extraction Kit

### Fast, Easy and Gentle Protein Isolation

#### Mammalian Membrane Protein Extraction Kit

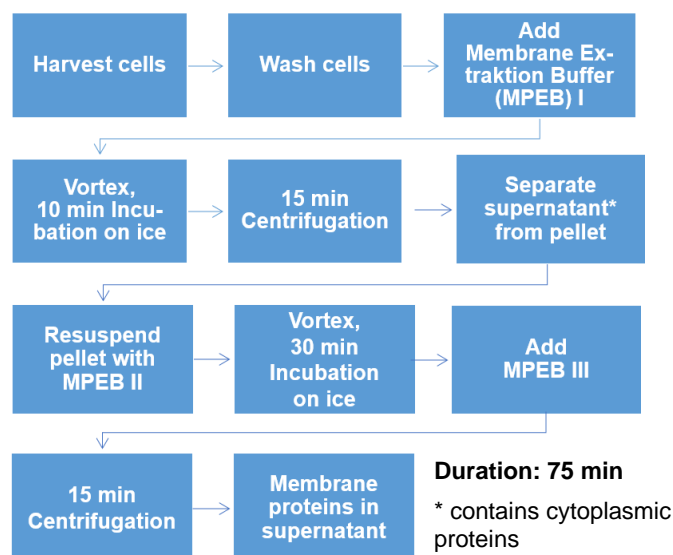
The Extraction Kit provides a fast, efficient and gentle method to extract proteins from mammalian cells and tissues. Native proteins can be obtained within 75 min without ultracentrifugation. The extracted proteins are suitable for SDS PAGE, Western Blot, ELISA, and other functional assays.



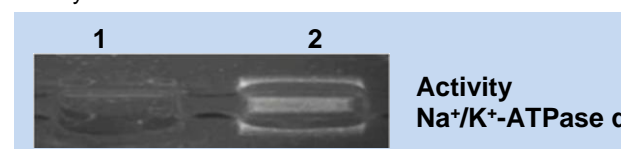
#### Features

- Contains ready-to-use optimized extraction buffers and protease inhibitor mixes
- High protein yields from cells and tissues
- Gentle lysis condition preserves protein activity for downstream assays
- **No need** for mechanical disruption or ultracentrifugation

#### Protein Extraction - Workflow



**Fig. 1:** Enzyme activity assay of Na<sup>+</sup>/K<sup>+</sup>-ATPase α (lane 2; lane 1: negative control) in protein extract – Preserved enzyme activity



#### Ordering Information

Product	Cat. no.	Size	List Price	Special Price*
Mammalian Membrane Protein Extraction Kit	39242.01	50 Samples	287.00 €	229.60 €
Mammalian Total Protein Extraction Kit	39241.01	100 Samples	217.00 €	-
Mammalian Nuclear and Cytoplasmic Protein Extraction Kit	39243.01	50 Samples	287.00 €	-

\* The special price is valid until November, 30<sup>th</sup> 2020.

Kontakt für weitere Produktinformationen:

Dr. Judith Koch

Tel.: +49 6221 13840-44

E-Mail: [Tech.Service@serva.de](mailto:Tech.Service@serva.de)

SERVA Electrophoresis GmbH  
Carl-Benz-Str. 7  
D-69115 Heidelberg • Germany  
[www.serva.de](http://www.serva.de)